



**AIR EAU BOIS**

BASE DE PLEIN AIR

# CABIN AND CAMPING RENTAL GUIDE 2024



# TABLE OF CONTENTS

Introduction.....	2
Règlements des hébergements et campings.....	4
Nos hébergements.....	5
Micro chalets - 1 lit queen (I, II et III).....	6
Micro refuges rustiques simples - 4 lits simples (II, III et IV).....	6
Gîte aile ouest - 4 lits simples, 4 lits doubles.....	7
Gîte aile est - 24 lits simples.....	7
Dômes géodésiques - 1 lit queen.....	7
Nos sites de camping rustiques.....	8
Nos sites de camping 2 services (eau et électricité).....	9
Arrivés et départs.....	10
Activités .....	11
Location d'équipements.....	12
Procédures d'urgence.....	13



# WELCOME TO THE BASE DE PLEIN AIR AIR-EAU-BOIS!

Finding and choosing the proper lodging is essential to a successful vacation. Our goal is to help you choose the ideal cabin or camping site to help you disconnect from the chaos of the city, and therefore to better connect with nature ! Nestled between 2 mountains, the Base de Plein Air Air-Eau-Bois is perfect to relax both body and mind without distractions.

Where "disconnecting" takes on all meaning as internet and cellphone network are unavailable.

We look forward to welcoming you to our outdoor base !

The Base de plein air Air Eau Bois team

# RULES FOR CABINS AND CAMPING SITES

## RESPECT THE OTHER CAMPERS !

- There is a curfew in place from 23:00 to 7:00.
- Moderate the volume of your music and activities.
- The consumption of alcohol and cannabis products is strictly prohibited in common areas.
- If you wish to add a night to your stay, present yourself at the main desk before 10:00 to make your request (depends on site or lodging availability)

THE STRICT APPLICATION OF THESE RULES IS MANDATORY, FAILURE TO COMPLY TO THEM WILL BE MET WITH EXPULSION FROM THE SITE WITHOUT FOREWARNING OR REFUND

## RESPECT NATURE !

- It is prohibited to feed wild animals.
- Do not leave your food or garbage outside.
- Properly dispose of your garbage by sorting it into the appropriate bins.
- Do not cut any trees and do not bring any firewood from an outside source.
- Keep your fire within the designated firepit.

## RESPECT THE EQUIPMENT !

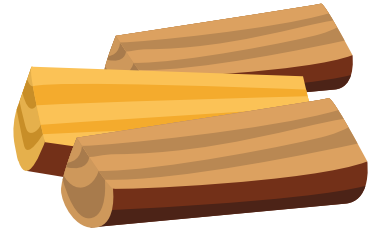
- Any damage or destruction, other than normal wear, of rented camp property will be billed to the renters name.

## PETS !

- **Friendly** cats and dogs are welcomed in our cabins and campsites (except the domes and prospector tents)
- Keep your pets leashed at all times.
- Barking must be controlled or managed
- Excrements must always be picked up, ask the main desk if you run out of bags.
- Pets are prohibited from accessing the sandy part of the beach, they may swim in the grassy sections.

# CAMPING AND LODGING

ALL OF OUR CABINS AND CAMPSITES RECEIVE A FREE BAG OF FIREWOOD PER NIGHT



## LEGEND



Pets allowed



Pets prohibited



4 season



Summer only



Tent campsite



RV authorized



Electricity access



Running water access

# OUR CABINS AND LODGINGS

## MICRO CHALETS - 1 LIT QUEEN (I, II ET III)

- Propane heater
- Nearby outhouse
- Access to the sanitary building (hot water and showers) by car (1 km)
- Free personal parking included
- 10 liters of drinking water
- 1 bag of free firewood per night
- BBQ
- Cooking equipment (see equipment inventory)



## MICRO REFUGES RUSTIQUES I ET V 1 LIT QUEEN

- Propane heater
- Nearby outhouse
- Access to the sanitary building (hot water and showers) (300 m)
- Free parking included
- 25 liters of drinking water
- 1 bag of free firewood per night
- Outdoors picnic table
- BBQ



## MICRO REFUGES RUSTIQUES II, III ET IV 2 LITS SUPERPOSÉS SIMPLE

- Propane heater
- Nearby outhouse
- Access to the sanitary building (hot water and showers)
- Free parking included
- 25 liters of drinking water
- 1 bag of free firewood per night
- Outdoors picnic table
- BBQ



# OUR CABINS AND LODGINGS



## GÎTE AILE OUEST 4 LITS SIMPLES, 4 LITS DOUBLES

- Central heating
- 3 washrooms
- Free personal parking included
- Running drinking water
- 1 bag of free firewood per night
- Kitchen (oven, microwave, fridge)
- BBQ
- Cooking equipment (see equipment inventory)



## GÎTE AILE EST - 24 LITS SIMPLES

- Central heating
- 3 washrooms
- Free personal parking included
- Running drinking water
- 1 bag of free firewood per night
- Kitchen (oven, microwave, fridge)
- BBQ
- Cooking equipment (see equipment inventory)



## DÔMES GÉODÉSQUES - 1 LIT QUEEN

- Propane heater
- Nearby outhouse
- Access to the sanitary building (hot water and showers) (800m)
- Free parking included
- 25 liters of drinking water
- 1 bag of free firewood per night
- Outdoors picnic table
- BBQ



# OUR RUSTIC CAMPSITES

## LE BALCON - 1 TENT

- **Isolated** campsite
- Access to the sanitary building (500m)
- Access to grounds : trails, beach, obstacle course, etc



## SITES 1 AND 3 - 1 TENT

- **Family camping** site
- Access to the sanitary building (50m)
- Access to grounds : trails, beach, obstacle course, etc



## L'ÉCUREUIL 1 AND 2 LE NID 1 AND 2 - 2 TENTS

- **Semi-isolated** campsites
- Access to the sanitary building (50m)
- Access to grounds : trails, beach, obstacle course, etc



## LA PRUCHE AND LE GALET - 2 TENTS

- **Isolated** campsites
- Access to the sanitary building (300m)
- Access to grounds : trails, beach, obstacle course, etc.



## SITES 6, 7, 8, 9, AND 11- 2 TENTS

- **Family camping** site
- Access to the sanitary building (50m)
- Access to grounds : trails, beach, obstacle course, etc



## SITES 5, 10, 13 AND 14 - 3 TENTS

- **Family camping** site
- Access to the sanitary building (50m)
- Access to grounds : trails, beach, obstacle course, etc



(petit VR)

## DÉCOUVREUR - 4 TENTS

- **Isolated** campsite
- Access to the sanitary building (200m)
- Access to grounds : trails, beach, obstacle course, etc.



## VOYAGEUR - 4 TENTS

- **Isolated** campsite
- Access to the sanitary building (50m)
- Access to grounds : trails, beach, obstacle course, etc.



## NATJELAIME - 4 TENTS

- **Isolated** campsite
- Access to the sanitary building (600m)
- Access to grounds : trails, beach, obstacle course, etc.





# OUR 2 SERVICE CAMPSITES

## WATER AND ELECTRICITY

### SITES 2 AND 4 - 2 TENTS OR SMALL RV

- Family camping site
- Access to the sanitary building (50m)
- Access to grounds : trails, beach, obstacle course, etc



### SITES 13 AND 14 - 3 TENTS OR MEDIUM RV

- Family camping site
- Access to the sanitary building (50m)
- Access to grounds : trails, beach, obstacle course, etc



## OUR GLAMPING TENTS

### LE CHEVREUIL - 1 QUEEN BED

- Isolated prospector tent
- Access to the sanitary building (400m)
- Access to grounds : trails, beach, obstacle course, etc



### LA SOUCHE - 1 LIT QUEEN

- Semi-isolated prospector tent
- Access to the sanitary building (100m)
- Access to grounds : trails, beach, obstacle course, etc



### LA CHOUETTE - 1 LIT QUEEN

- Isolated prospector tent
- Access to the sanitary building (600m)
- Access to grounds : trails, beach, obstacle course, etc



# ARRIVALS AND DEPARTURES

## ARRIVAL PROCEDURE

Time of arrival : 15h

You have access to the site for the entire day. Your parking pass is available at the main desk.

The bag of firewood will already be at your campsite or cabin.

Please give us forewarning if you plan on arriving outside of our business hours.

## DEPARTURE PROCEDURE

Time of departure : 11h

You have access to the site for the entire day. The campsite or cabin must be vacant at 11h.

Please extinguish your fire and/or heating system before you leave.

We request that you wash any dishes included in the reservation.

# EQUIPMENT RENTAL

Our equipment is available depending on the season and how busy we are. Please reserve your equipment or contact us to make sure you have the equipment you need for your adventure !

## LIST OF EQUIPMENT PER SEASON (DATES VARY ACCORDING TO WEATHER CONDITIONS)

- Canoes (2 and 3 seaters)
- Paddles and lifejackets
- Paddle board (SUP)
- 

- Adult and child snowshoes
- Cross country skis
- Ski-hoks (hiking skis)

# EMERGENCY PROCEDURES

## EMERGENCY PHONE CALLS

WE HAVE A PUBLIC TELEPHONE, SEE OUR GROUND'S MAP

Before you make a call, ensure you have the following information on hand :

1. Where the victim is situated, as well as our address
2. The number of injured or ill people
3. A brief description of the mechanism of injury
4. A description of the primary and secondary exams (state of consciousness, bleeding, breathing, feeling, etc.)
5. A brief description of the care already administered at the time of the call.

This telephone is at your disposition for emergency calls only

- Select a line before dialing.
- The nearest hospital is a 49 minute drive away, we recommend transporting the injured person yourselves. That said, in the measure that transporting the injured yourself safely is possible.
- If possible, locate a member of our staff before beginning your management of the situation, our entire team is trained in wilderness first aid.

### EMERGENCY : 9-1-1

Base de plein air Air Eau Bois  
32 chemin Base de Plein Air  
Denholm, QC  
J8N 9P6  
1 800-363-4041  
819-457-4040

#### HOSPITAL

Gatineau .....819-966-6100  
Hull .....819-966-6200  
Ottawa .....613-798-5555  
Wakefield (49 minute drive).....819-459-1112  
Poison control center .....1 800-463-5060

#### FIRST RESPONDERS

Denholm.....819-457-2992 # 202  
Bowman .....819-454-2421  
Notre-Dame-du-Laus .....819-767-1212  
Lac Ste-Marie .....819-467-5437  
POLICE SQ / MRC Urgence SQ Outaouais .....819-770-9111  
Papineauville MRC .....819-427-6269